

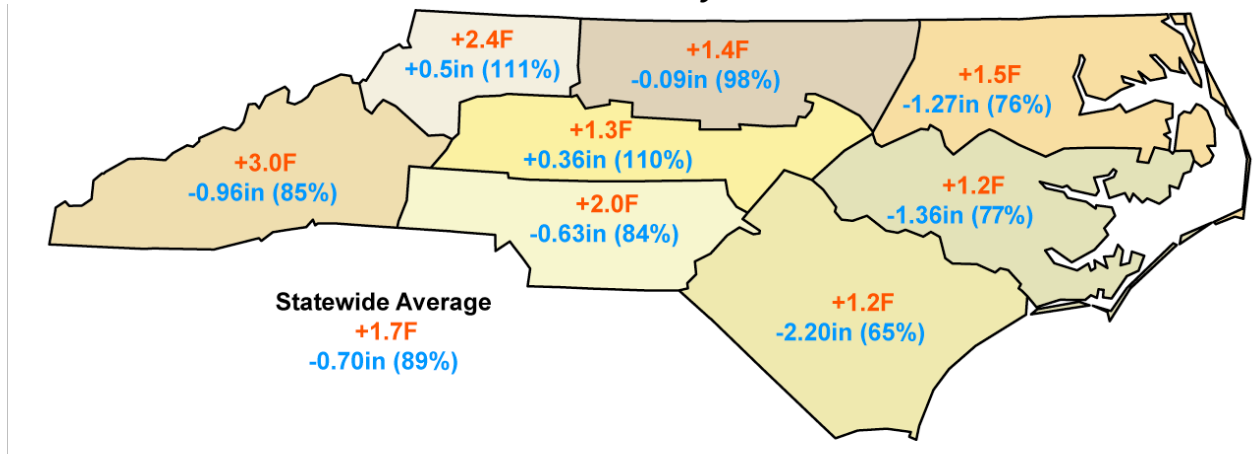
Monthly Climate Summary: North Carolina

July 2010: Still Hot, Still Dry

Ryan Boyles, State Climate Office of North Carolina
 August 3, 2010

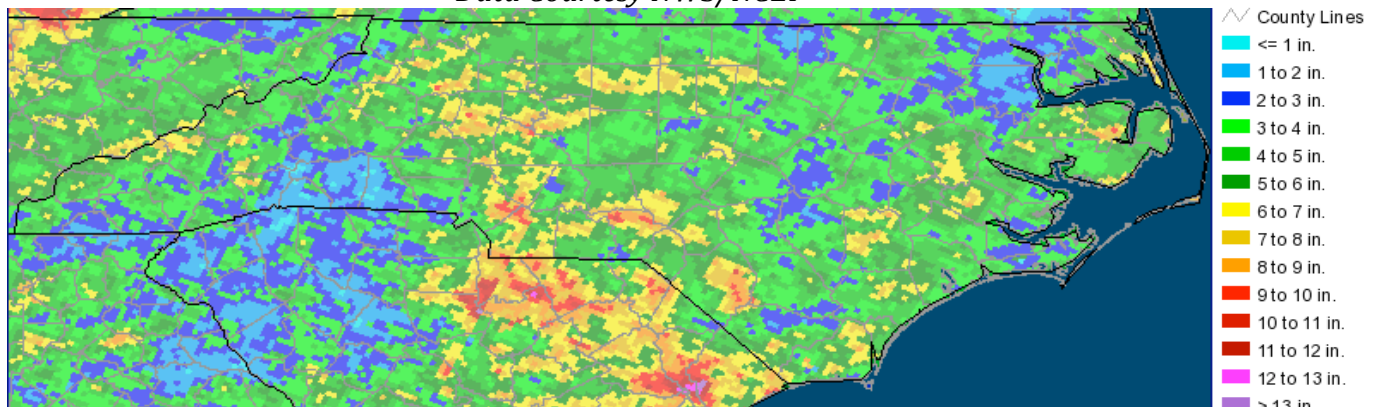
Climate Summary

Temperature and Precipitation by Climate Division Departures from Normal for July 2010 Based on Preliminary Data



July 2010 in North Carolina was warm and dry. While not quite as hot as in June 2010, temperatures ranked as one of the top 5 warmest on record for locations including Raleigh, Greensboro, Reidsville, Wilkesboro, Banner Elk, Lenoir, Hickory, Lincolnton, and Murphy. Combined with the heat of July were more dry conditions, especially across eastern NC and in far western counties. Central NC fared better, with much of the Yadkin River Basin above normal for the month. Statewide, temperatures ranked as the 10th warmest since 1895 and the 32nd driest on record.

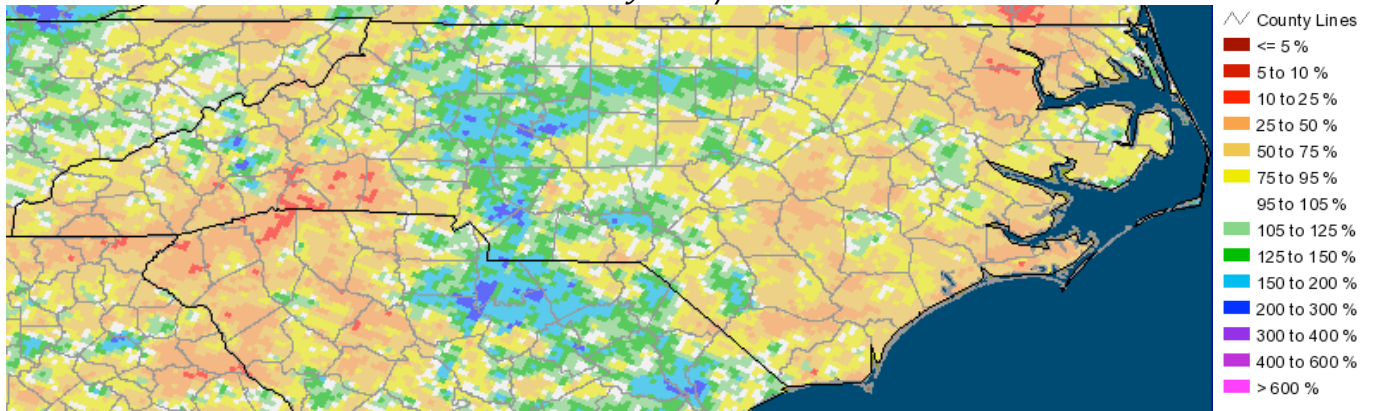
Precipitation for July 2010 Based on estimates from NWS Radar Data Courtesy NWS/NCEP



Precipitation for July 2010: Percent of Normal

Based on estimates from NWS Radar

Data Courtesy NWS/NCEP



Impacts to Agriculture

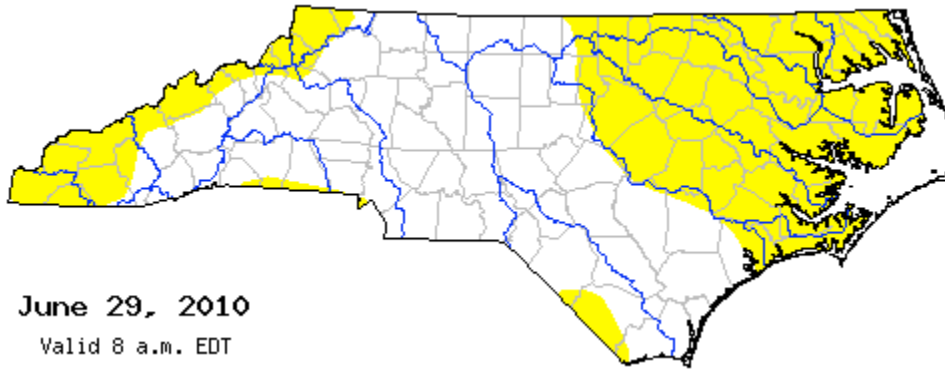
Heat and dry conditions continued to cause problems for crops, especially corn in eastern NC and pastures in western NC. Reports from the NC Department of Agriculture suggest that the corn crop may be completely lost for some growers in eastern NC. Other reports suggest ranchers in western NC were turning to hay for feed early because pastures were dry and unproductive. Due to these impacts, drought designations were introduced in western and eastern counties. According to the US Drought Monitor, Moderate Drought (D1) was observed at the end of July in mountain counties and the northern coastal plain, while Severe Drought (D2) was also observed in a few northeastern counties.

Impacts to Water Resources

So far, the hot and dry conditions have had less of an impact on water resources as compared to agricultural resources. While streams in areas of northeastern NC and western counties are dropping into drought ranges, most reservoirs and groundwater monitors report near normal conditions. The NC Drought Management Advisory Council continues to have weekly technical conferences to review conditions and make recommendations to the US Drought Monitor.

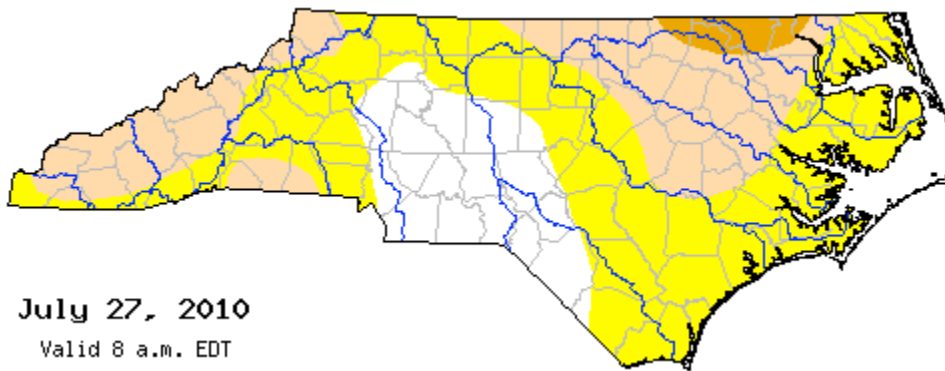
US Drought Monitor for North Carolina

Courtesy NC DENR Division of Water Resources



June 29, 2010
Valid 8 a.m. EDT

- Drought Classifications**
- D0 - Abnormally Dry
 - D1 - Moderate Drought
 - D2 - Severe Drought
 - D3 - Extreme Drought
 - D4 - Exceptional Drought



July 27, 2010
Valid 8 a.m. EDT