

Climate Summary for Florida February 2010

Prepared by Preston Leftwich, David Zierden, and Melissa Griffin

Florida Climate Center
The Florida State University
Tallahassee, Florida

Average temperatures well below normal for February. Monthly average temperatures in January were well below normal across the entire state (Table 1). Primary reporting stations observed average temperatures for the month at least four degrees below normal, with stations in northern and central Florida more than seven degrees below normal. Minimum temperatures at Pensacola (26° F) and Tallahassee (24° F) on the 16th both tied records for the date. The strength of the cold was evident again this month as at least 15 record low maxima were set or tied across the central and southern portions of the state. In particular, the maximum temperature in Key West of 57° F on the 14th broke the record of 58° F established in 1899.

Table 1. February average temperatures and departures from normal (° F) for selected cities.

Station	Average Temperature	Departure from Normal
Pensacola	46.7	-8.2
Tallahassee	46.5	-8.3
Jacksonville	48.6	-7.2
Orlando	54.7	-7.9
Tampa	55.0	-7.7
Miami	64.6	-4.5
Key West	64.7	-6.1

February rainfall generally above normal in southern areas and near normal in northern and central areas. Rainfall totals for February well above normal at some southern stations, while totals were near normal across most of northern and central Florida (Table 2). Heaviest rainfall occurred in extreme southern areas as surface low pressure systems moved across the peninsula. Daily record amounts were recorded at Miami (2.90"), Key West (1.60") and Orlando (0.62") on the 1st. On the 5th, Apalachicola recoded a disly record amount of 2.30 inches. One inch of snow was reported at Jay and DeFuniak Springs on the 12th. A trace of snow was observed at numerous locations in northwest Florida from Pensacola eastward to Tallahassee overnight from the 11th to the 12th.

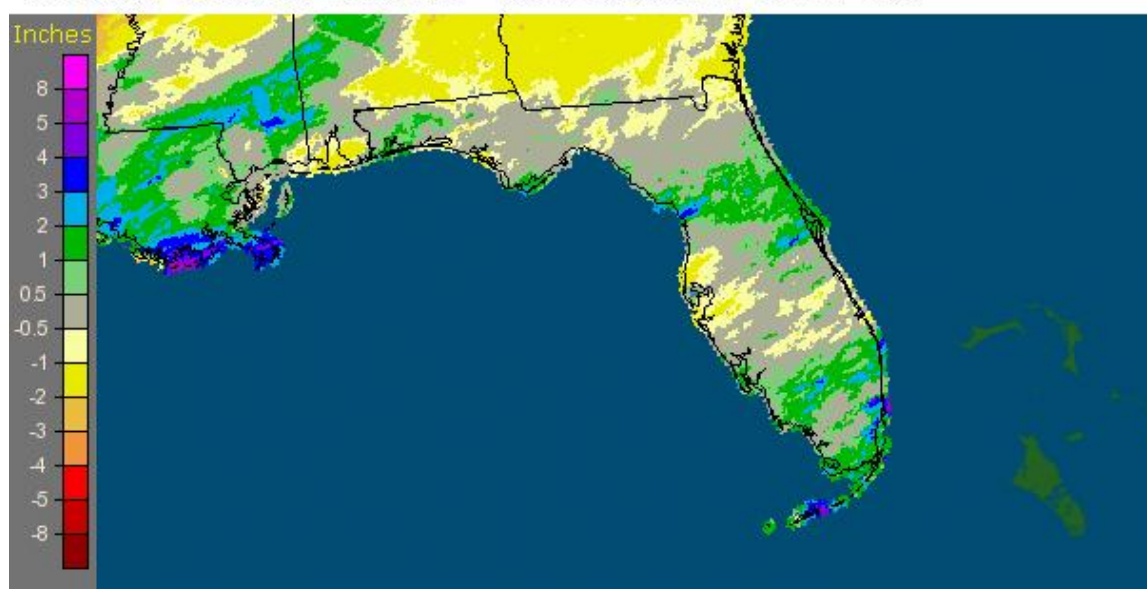
Table 2. February precipitation totals and departures from normal (inches) for selected cities.

Station	Total rainfall	Departure from Normal
---------	----------------	-----------------------

Pensacola	6.03	+1.35
Tallahassee	4.97	+0.34
Jacksonville	2.71	-0.44
Orlando	4.35	+2.00
Tampa	1.99	-0.68
Miami	4.69	+2.62
Key West	4.63	+3.12

A graphical depiction of the monthly rainfall departure from normal (inches) for February is given in the figure below (courtesy of NOAA, NWS).

Florida: February, 2010 Monthly Departure from Normal Precipitation
Valid at 3/1/2010 1200 UTC- Created 3/1/10 17:46 UTC



El Nino continues to impact Florida. Sea surface temperatures in the equatorial Pacific Ocean remained more than 0.5° C above normal, designating moderate El Nino conditions. A series of surface low pressure areas moved from the Gulf of Mexico across the Florida peninsula during February. Such an active southerly storm track is associated with El Nino conditions. This brought above normal rainfall to both northwestern and southern areas.

Hazardous weather. Thunderstorm winds toppled a tent at the Florida Fairgrounds near Temple Terrace on the 5th, injuring seven people. On the 12th, thunderstorm winds up to 70 miles per hour produced damage across Miami-Dade County. Later in the month, hail up to the size of golf balls fell at West Palm Beach, and two golfers were injured by hail near Palm City on the 24th.

Agricultural and other impacts. Potato farmers near Hastings replanted crops after recent heavy rains and flooded fields caused rotting. Snow in the extreme northwest halted field work briefly. Below normal temperatures slowed development of vegetable crops in many southern areas. However, drier allowed vegetables and watermelons to be planted around Lake Okeechobee.

